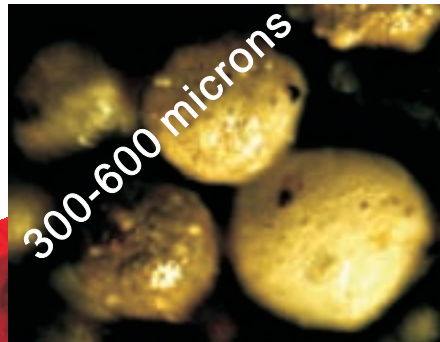


Introduction

Sun Microsphere hollow ceramic microspheres is made of PFA(pulverized fuel ash) by products engineered to specific customers' demands, which offers important benefits .EX-300/600 has very unique features in reactions to heat and demanded by foundry applications.



Typical properties

Product	EX-300/600
true density	1.05-1.35 g/cc
density	0.36 g/cc
crush strength	1500 psi
D10	300 microns
D50	450 microns
D90	550 microns
top effective size	600 microns
floating ratio	95%
thermal conductivity	1.5 W/mK
pH Value	6-8
melting point	1150 degree C
color	Gray
Looks like	free flowing powder

Chemical Composition

SiO ₂	58-63%
Al ₂ O ₃	25-31%
Fe ₂ O ₃	3.3-6.0%
CaO	0.5-1.1%
TiO ₂	0.05-0.15%
MgO	0.5-1.3%
K ₂ O	0.3-0.6%
Na ₂ O	0.5-1.0%
Loss on Ignition	2.5%

Advantages

- ✍ Unique reactivity to temperature;
- ✍ Reduced shrinkage and warpage

Package and Storage

Big bag: polypropylene container bag;
 Typical package size: 1150 x 1150 x 1050mm (height)
 Typical net weight: 450kg

Paper Bag: 3ply water soluble kraft paper bag;
 Typical package size: 750 x 400 x 180mm (height)
 Typical net weight: 18kg

Both types are palletized and wrapped.

Call now to order at
+86 13903150114

